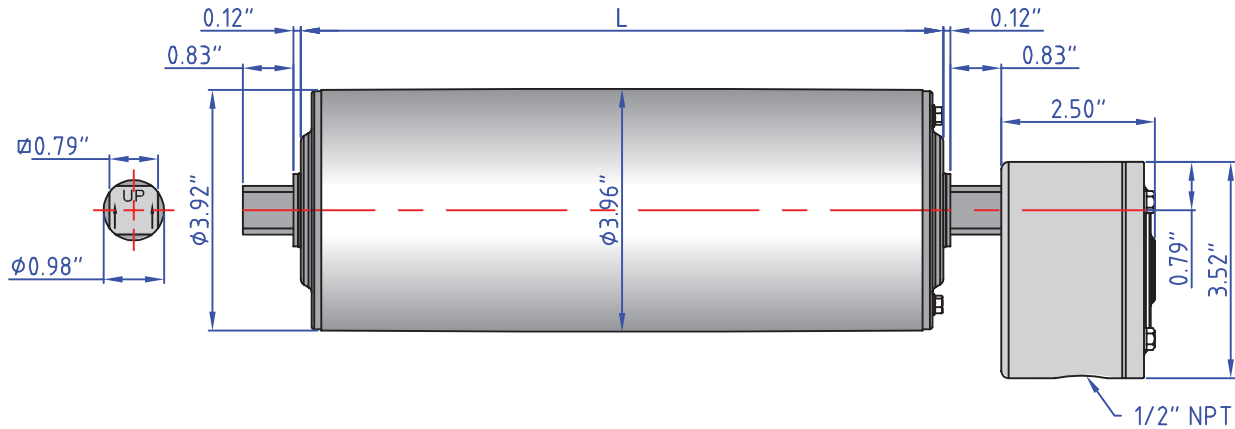


# SSV TM100 SERIES DIMENSIONS (4.0" diameter)



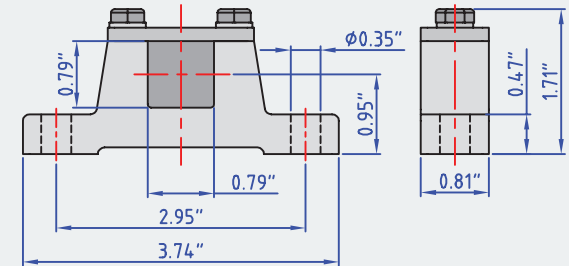
## SSV TM100B25 Drum Motor (matching Idler KT100B25\*\*)



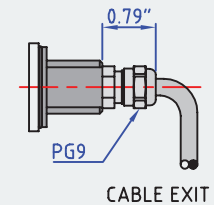
Standard drum motor face widths\* (L) in inches:

10.24	10.83	12.20	14.17	16.14	18.11	20.08	22.05	24.02
25.98	27.95	29.92	31.89	33.86	35.83	37.80	39.76	41.73
43.70	45.67							

### Bracket AB 20



### Optional Cable Type



\*Some face widths are not available in all horsepower. For minimum available face widths refer to page 16.

\*\*Idler dimensions are identical to the drum motor with no junction box.

# SSV TM100 SERIES SPECIFICATIONS (4.0" diameter)



## 0.25 HP

V (ft/min) M/G	409 4/S2	327 4/S2	291 4/S2	258 4/S2	227 4/S2	199 4/S2	177 4/PL2	157 4/PL2	149 4/PL2	132 4/PL2	111 4/PL2	106 4/PL2	93 4/PL2	83 4/PL2	69 4/PL2
Belt Pull (lbs)	20	25	28	32	36	41	47	52	55	63	74	78	88	100	119
Drum RPM	397	317	282	250	220	193	172	152	145	128	108	103	90	81	67

V (ft/min) M/G	56 4/PL2	44 4/PL3	37 4/PL3	33 4/PL3	27 4/PL3	23 4/PL3	20 4/PL3	17 4/PL3	14 4/PL3
Belt Pull (lbs)	148	189	225	253	274	274	274	274	274
Drum RPM	54	43	36	32	26	22	19	17	14

## 0.16 HP

V (ft/min) M/G	258 4/S2	227 4/S2	199 4/S2	177 4/PL2	157 4/PL2	149 4/PL2	132 4/PL2	111 4/PL2	106 4/PL2	93 4/PL2	83 4/PL2	69 4/PL2	56 4/PL2	44 4/PL3	37 4/PL3
Belt Pull (lbs)	20	23	27	30	34	35	40	48	50	57	64	76	94	121	144
Drum RPM	250	220	193	172	152	145	128	108	103	90	81	67	54	43	36

V (ft/min) M/G	33 4/PL3	27 4/PL3	23 4/PL3	20 4/PL3	17 4/PL3	14 4/PL3
Belt Pull (lbs)	162	193	230	259	274	274
Drum RPM	32	26	22	19	17	14

## 0.16 HP

V (ft/min) M/G	305 6/S2	273 6/S2	218 6/S2	194 6/S2	172 6/S2	152 6/S2	105 6/PL2	99 6/PL2	88 6/PL2	74 6/PL2	71 6/PL2	62 6/PL2	55 6/PL2	46 6/PL2	37 6/PL2
Belt Pull (lbs)	17	19	24	27	31	35	50	53	60	71	74	85	96	114	142
Drum RPM	296	265	212	188	167	148	102	96	85	72	69	60	53	45	36

V (ft/min) M/G	29 6/PL3	24 6/PL3	22 6/PL3	18 6/PL3	15 6/PL3	13 6/PL3	11 6/PL3	9 6/PL3
Belt Pull (lbs)	181	216	243	274	274	274	274	274
Drum RPM	28	23	21	17	15	13	11	9

## 0.14 HP

V (ft/min) M/G	258 4/S2	227 4/S2	199 4/S2	177 4/PL2	157 4/PL2	149 4/PL2	132 4/PL2	111 4/PL2	106 4/PL2	93 4/PL2	83 4/PL2	69 4/PL2	56 4/PL2	44 4/PL3	37 4/PL3
Belt Pull (lbs)	18	20	23	26	29	31	35	42	42	50	56	67	83	106	126
Drum RPM	250	220	193	172	152	145	128	108	103	90	81	67	54	43	36

V (ft/min) M/G	33 4/PL3	27 4/PL3	23 4/PL3	20 4/PL3	17 4/PL3	14 4/PL3
Belt Pull (lbs)	142	169	201	227	271	274
Drum RPM	32	26	22	19	17	14

V = Belt Speed (ft/min)

M/G = Motor/Gear Reducer Configuration (at rated horsepower)

High Speed  
Low Torque

2/S2 4/S2 6/S2 2/S3 4/S3 6/S3 2/PL2 4/PL2 6/PL2 2/PL3 4/PL3 6/PL3

Low Speed  
High Torque

# SSV TM100 SERIES SPECIFICATIONS (4.0" diameter)



## 0.11 HP

<b>V (ft/min) M/G</b>	194 6/S2	172 6/S2	151 6/S2	118 6/PL2	105 6/PL2	99 6/PL2	88 6/PL2	74 6/PL2	71 6/PL2	62 6/PL2	55 6/PL2	46 6/PL2	37 6/PL2	29 6/PL3	24 6/PL3
<b>Belt Pull (lbs)</b>	19	21	24	31	35	36	41	49	51	58	66	79	97	125	148
<b>Drum RPM</b>	188	167	147	115	102	96	85	72	69	60	53	45	36	28	23
<b>V (ft/min) M/G</b>	22 6/PL3	18 6/PL3	15 6/PL3	13 6/PL3	11 6/PL3	9 6/PL3									
<b>Belt Pull (lbs)</b>	167	200	237	267	274	274									
<b>Drum RPM</b>	21	17	15	13	11	9									

**V = Belt Speed (ft/min)**

**M/G = Motor/Gear Reducer Configuration (at rated horsepower)**

High Speed  
Low Torque



Low Speed  
High Torque