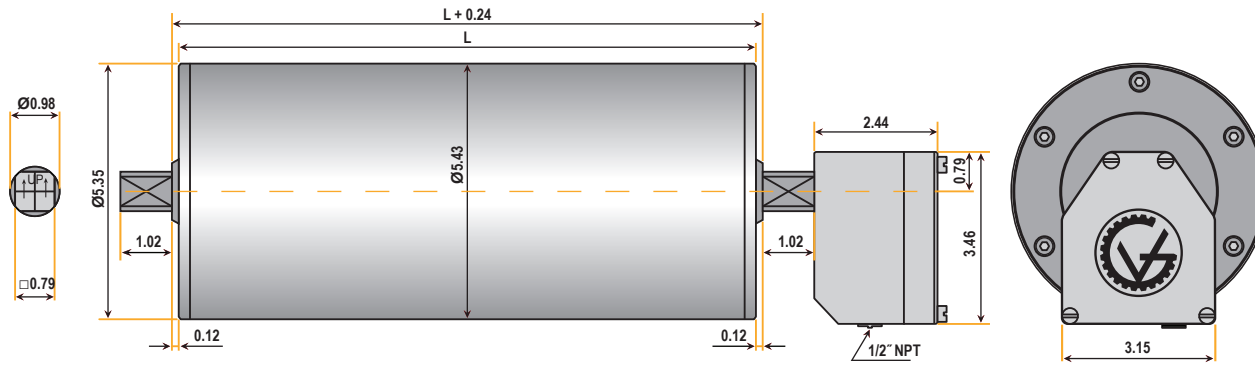


TM138B25 Drum Motor (matching Idler KT138B25**)

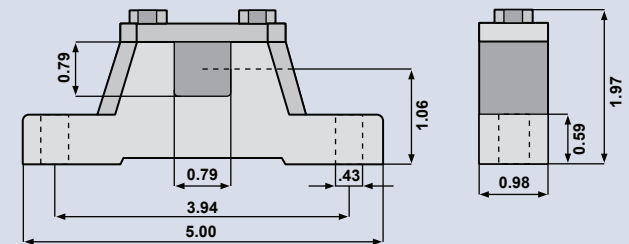


Standard face widths* (L) in inches:

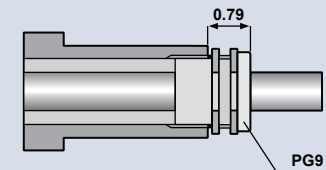
10.83	11.81	13.78	15.75	17.72	19.69	21.65	23.62	25.59
27.56	29.53	31.50	33.46	35.43	37.40	39.37	41.34	43.31
45.28	47.24							

TM138A25 Drum Motor and KT138A25 Idler available upon request.

Bracket AB 25



Optional Cable Type



Note: When Optional Cable Type is selected, the minimum face width (L) increases by 1.969 inches.

*Some face widths are not available in all horsepower. For minimum available face widths refer to page 19.

**Idler dimensions are identical to the drum motor with no junction box.

1.5 HP

V (ft/min) M/G	343 4/S2	258 4/S2	218 4/S2	135 4/S2
Belt Pull (lbs)	156	208	246	398
Drum RPM	242	181	154	95

1.0 HP

V (ft/min) M/G	702 2/S2	526 2/S2	447 2/S2	343 4/S2	258 4/S2	218 4/S2	160 4/S2	135 4/S2	120 4/S2	79 4/PL2	63 4/PL2	53 4/PL2	41 4/PL2
Belt Pull (lbs)	51	68	80	104	139	164	224	266	299	451	568	672	767
Drum RPM	494	370	315	242	181	154	112	95	84	56	44	37	29

0.75 HP

V (ft/min) M/G	707 2/S2	530 2/S2	450 2/S2	356 4/S2	267 4/S2	227 4/S2	165 4/S2	146 4/S3	124 4/S2	105 4/S2	95 6/S2	80 6/S2	67 4/S3	61 4/S3	54 4/PL2
Belt Pull (lbs)	38	51	60	75	100	118	162	184	217	255	284	334	398	441	494
Drum RPM	498	373	317	251	188	160	116	103	87	74	67	57	47	43	38

V (ft/min) M/G	43 4/PL2
Belt Pull (lbs)	617
Drum RPM	31

0.5 HP

V (ft/min) M/G	349 4/S2	262 4/S2	223 4/S2	162 4/S2	142 4/S2	106 4/S2	90 4/S2	70 6/S2	59 4/S3	45 4/S3	42 4/PL2	36 6/PL2	28 6/PL2
Belt Pull (lbs)	51	68	80	111	126	168	198	257	305	402	422	499	633
Drum RPM	246	184	157	114	100	75	64	49	41	31	30	25	20

0.34 HP

V (ft/min) M/G	350 4/S2	262 4/S2	223 4/S2	162 4/S2	142 4/S2	108 4/S2	91 4/S2	66 4/S3	59 4/S3	45 4/S3
Belt Pull (lbs)	35	46	55	75	85	113	133	184	207	273
Drum RPM	246	184	157	114	100	76	64	47	41	31

0.25 HP

V (ft/min) M/G	12 4/PL3	9 4/PL3	8 4/PL3	6 4/PL3
Belt Pull (lbs)	742	767	767	767
Drum RPM	8	7	6	4

V = Belt Speed (ft/min)

M/G = Motor/Gear Reducer Configuration (at rated horsepower)

High Speed
Low Torque



Low Speed
High Torque